

# User's Manual

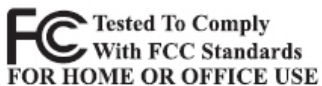
Before beginning to operate this unit, please read the USER'S MANUAL carefully in order to make sure that the best possible performance is obtained

- ☐ X200
- ☐ X300
- ☐ X500
- ☐ X500-3



## DISCLAIMER

No warranty or representation, either expressed or implied, is made with respect to the contents of this documentation, its quality, performance, merchantability, or fitness for a particular purpose. Information presented in this documentation has been carefully checked for reliability; however, no responsibility is assumed for inaccuracies. The information contained in this documentation is subject to change without notice. In no event will the producer be liable for direct, indirect, special, incidental, or consequential damages arising out of the use or inability to use this product or documentation, even if advised of the possibility of such damages.



# Table of Contents

Operational Precautions ..... 1

System Requirements ..... 1

Box Contents ..... 2

Overview ..... 2

Software Installation ..... 3

Software Quick Reference Guide.....7

Trouble shooting..... 12

Technical Specifications..... 13

Limited Warranty..... 15

Thank you for purchasing the CamScanner

# OPERATIONAL PRECAUTIONS

- Do not leave the equipment in direct sunshine or close to heating appliances.
- When the main unit needs cleaning, wipe it first with a damp cloth that had been soaked in solution of neutral detergent and tightly wrung; then dry it off with clean cloth. Never use volatile solvents such as paint thinner, benzine, insecticide, etc. on the unit as they may deform, discolour and damage it. Also do not immerse the unit in water, as it will result in breakdown.
- Read Instructions All the safety and operating instructions should be read before the appliance is operated.
- Retain Instructions The safety and operating instructions should be retained for future reference.
- Attachments Do not use attachments not recommended by the product manufacturer as they may cause hazards.
- Do not place this product in any humid, dusty, windy or vibrating location. Use this product in the following environmental conditions:
  - Temperature: 0\_C~40\_C (32\_F~104\_F)
  - Humidity: 30%~85% (No condensation)
- In handling (including setting up and storing) or carrying the camera, be meticulously careful not to give an impact on the camera head.
- Do not look into the lamp (LED) part directly at close range. It may damage your eyes.

## System Requirements \*

---

Windows/Intel Compatible Personal Computer

1. Pentium CPU or above
2. CD-ROM Drive
3. 64 MB RAM (128 MB Recommended)
4. 250 MB Free Hard Disk Space (300 MB Recommended)
5. USB Port
6. Microsoft Windows XP , Windows 2003 , Windows VISTA , Windows 7
7. Video card that supports 16-bit color or greater

## Box Contents \*

---

The CamScanner package contains the following:

- 1.CamScanner Doc Scanner & Visual Presenter
- 2.Installation CD-RAM (driver, Manual, application software )
- 3.USB Cable
- 4.User's Manual
- 5.Warranty Card
- 6.Anti-glare Sheet
- 7.Magnetic Wood Platform (optional)

\* Higher requirements might be needed when scanning or editing a large quantity of image data. The system requirements here are only a guideline, as in general the better the computer (motherboard, processor, hard disk, RAM, video graphic card), the better the results.

\* Save the box and packing materials in case you need it in the future.

## Overview


---

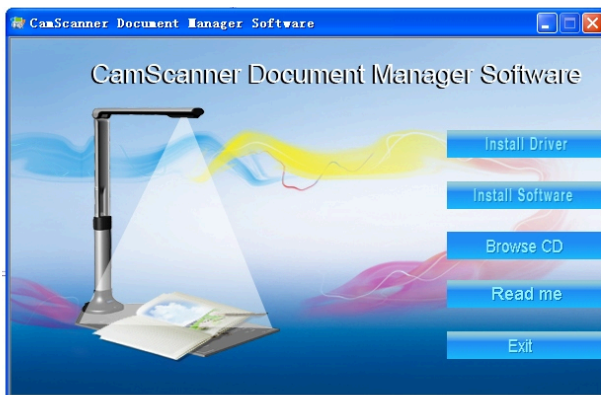


## Software Installation

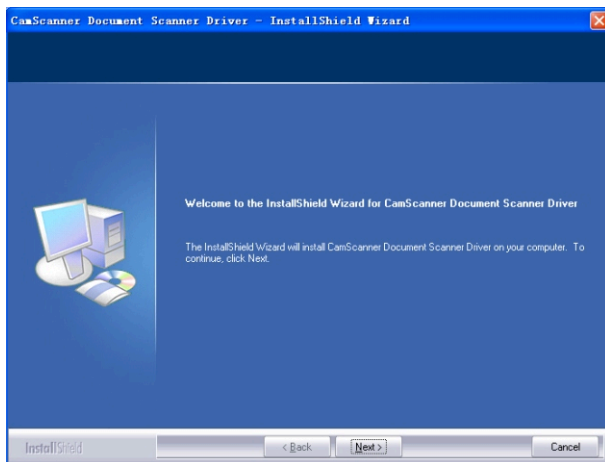
---

Connect the CamScanner with a computer via USB cable first before installation.

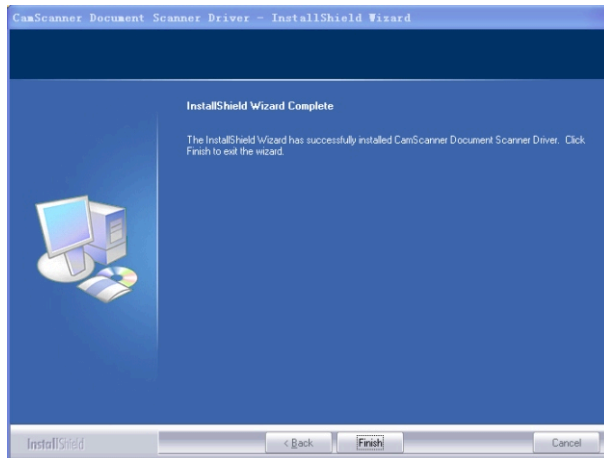
- A、 Insert the CD-ROM that comes with your CamScanner into the CD-ROM drive. Press  Setup.exe to start up installation. If Autorun is enabled on your system, then the CamScanner Software Setup window will be displayed automatically as below. Click 'Install Driver' to install the driver.



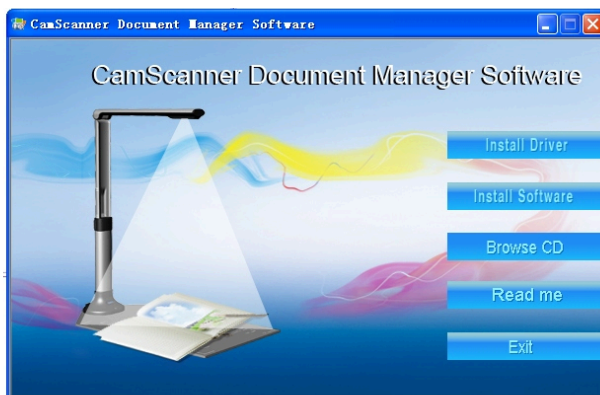
- B、 Then click 'next' as below:



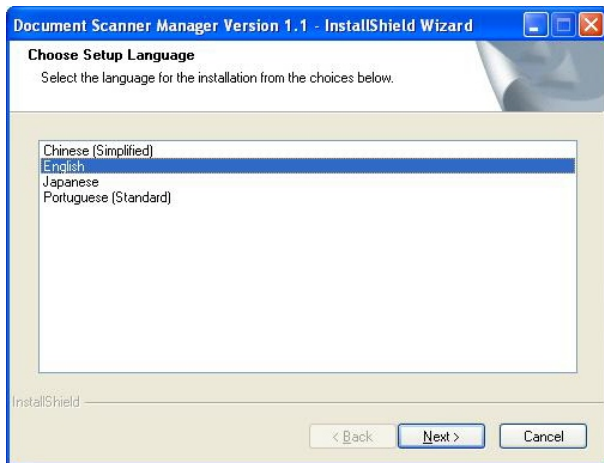
- C、The InstallShield Wizard has successfully installed CamScanner Document Scanner Driver. Click 'Finish' to exit the wizard. (WindowsXP / Vista / 7 do not need to install this driver)



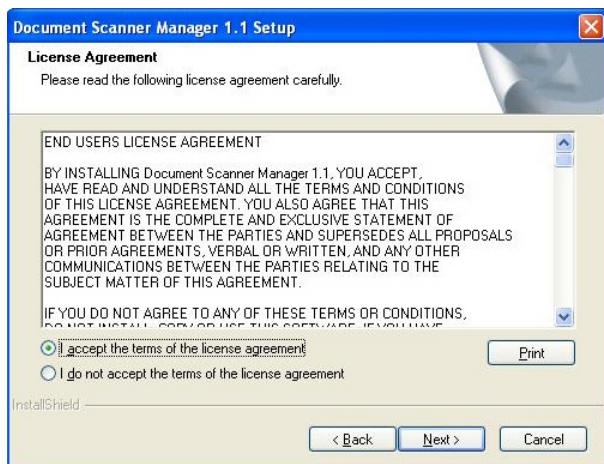
- D、After driver installation, click 'Install Software' as below



- E、Choose the installation language (here we take English as the example).Then follow the Installshield Wizard instruction step by step.

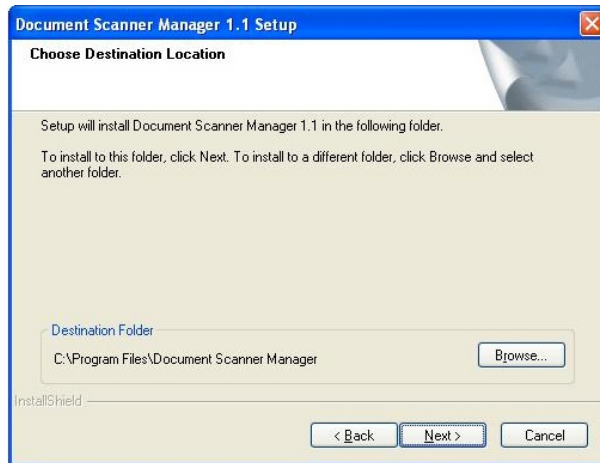


- F、Choose 'I accept the terms of the license agreement' when License Agreement window pop up as bellow

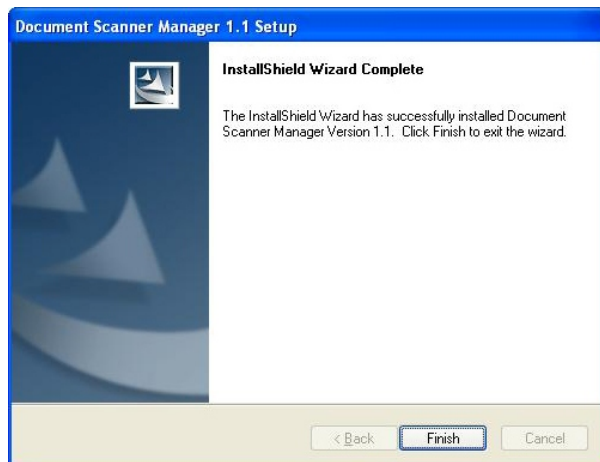




- G、Installation Destination Folder could be chosen as below

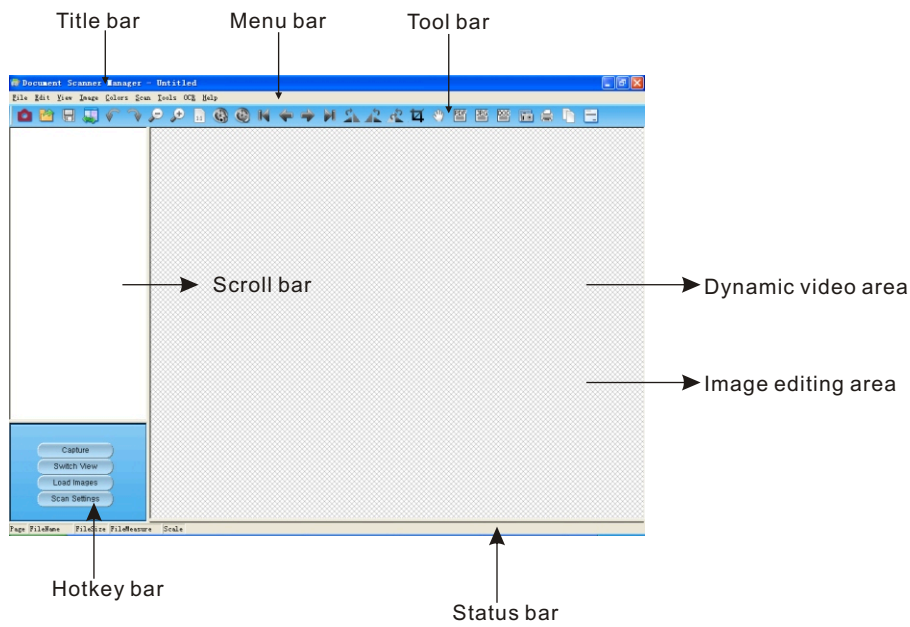


- H、Click 'Finish' to complete the installation



# Software Quick Reference Guide

## Main Frame



## Tool Bar Illustration



- |               |                    |                         |
|---------------|--------------------|-------------------------|
| 1:scan image  | 10:start auto scan | 19:crop image           |
| 2:open        | 11:stop auto scan  | 20:move image           |
| 3:save        | 12:first image     | 21:stored as PDF format |
| 4:switch view | 13:previous image  | 22:stored as DOC format |
| 5:undo        | 14:next image      | 23:stored as JPG format |
| 6:redo        | 15:last image      | 24:scan setting         |
| 7:zoom out    | 16:rotate right    | 25:print                |
| 8:zoom in     | 17:rotate left     | 26:print screen         |
| 9:actual size | 18:rotate...       | 27:about                |

## Photo workflow

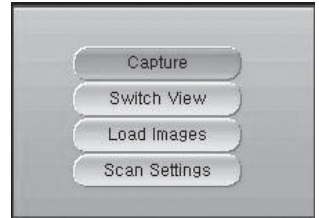
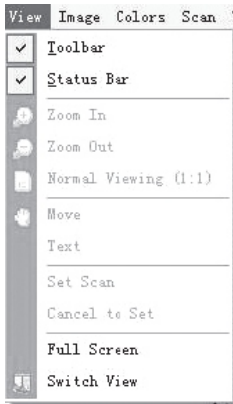
### 1, View conversion to video

View conversion method:

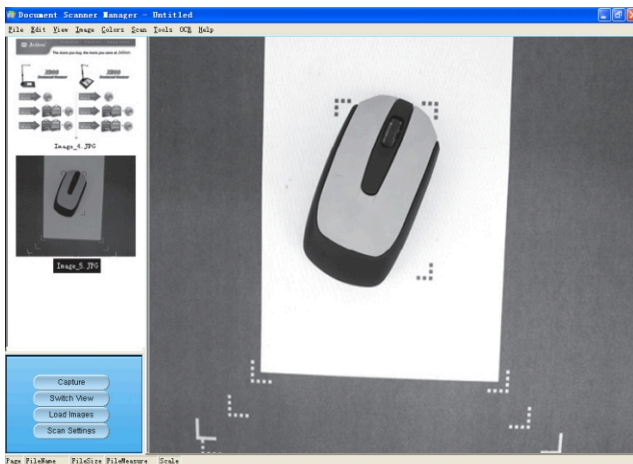
1) Click on the View menu under the view

2) Click on view of conversion of the toolbar

3) Click on the view interface conversion



After the conversion to video:



Click on the right camera view, you can use mouse wheel enlarge orminify the current image to Photograph.

## 2, Scanning images

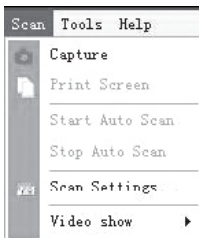
### 1) Image scanned size settings

- a) The default setting is based on window size scanning
- b) Can be set the size of the image in the scan settings. Select in the scan setting dialog box, for example: Select A6 paper, the image box will appear a red box which is the scope of the size of the election. Detailed operation please refer to [the software menu] - "[Scan]" - "[Scan Settings].
- c) may be required to scan the view to set the location and size of the picture.

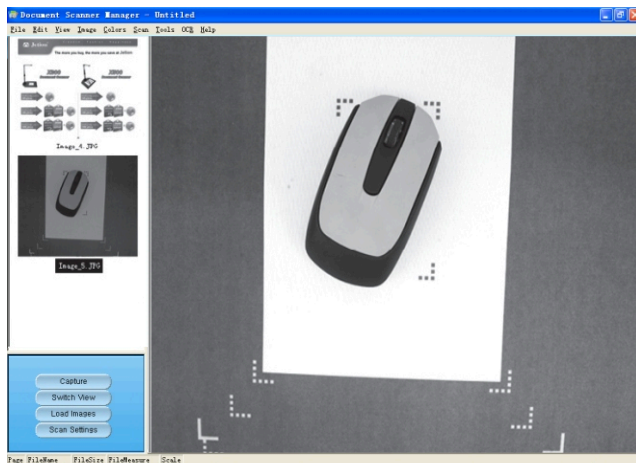
That is suitable to facilitate a continuous camera image of the same place. Detailed operation please refer to [the software menu] - "[View]" - "[set size].

### 2) Scanned images method:

- a) Click on the Scan menu to scan images
- b) Click on the toolbar to scan



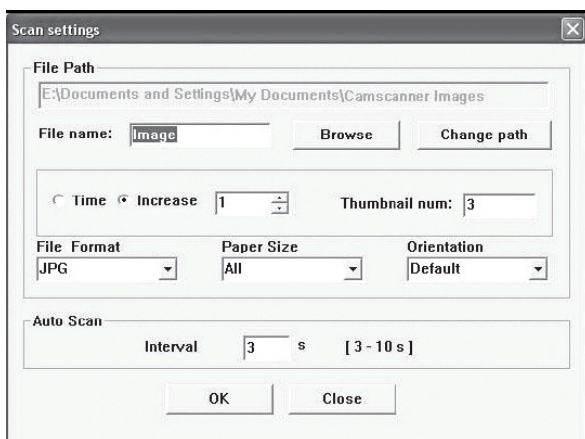
### Shoot pictures:



Click the right image browsing interface, you can use mouse wheel to brows the current image.

## Photograph setting

Click on [the software menu] - "[Scan] -" [Scan Settings].



【File Path】 it mainly for setting and modifying the names, naming, saving path, and other information of the scanned images. As shown below

(1) Time and incremental: naming method; when two ways switching, do not conflict with the previous set;

(2) Thumbnail number: the number of left thumbnail image in the list; minimum 1, maximum 6

(3) 【File Format】 The menu is the drop-down box. Choose format to save the scanned image, it divided into JPG, BMP, and TIF3 kinds of formats.

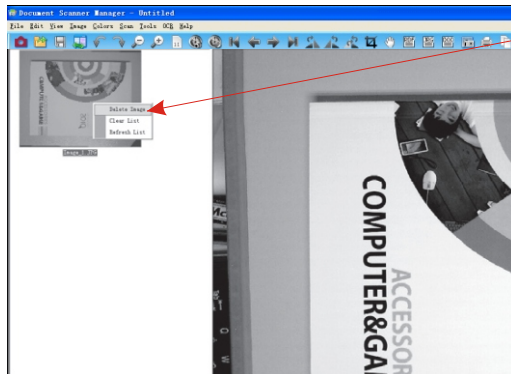
(4) 【Paper Size】 The menu is the drop-down box. To set the size of the scanned image, save the scanned image on the pre-set good size had been set.

(5) 【Picture Direction】 The menu option is used for the hook. The direction of Video View window is fixed ,if you want to rotate the scanned images, you can check the menu item here and hook by your need, there are three available options, including: no rotation, clockwise and counter-clockwise.

(6) 【Non-rotating】 Scan the image according to the direction of current video preview view; clockwise: In accordance with the current video preview of the direction of view 90 ° clockwise rotation to scan images; counter-clockwise: In accordance with the current video preview of the direction of view rotated 90 ° counterclockwise to scan pictures.

【Auto Scan】 expressed time interval scan from time to time. Time range: 3 to 10 seconds.

## Image management



**【Delete Photo】** Right-click the selected pictures, then you can delete the picture



Select "Yes" will remove the photo together with one in the hard drive

Select "No" will only delete the photo on the list

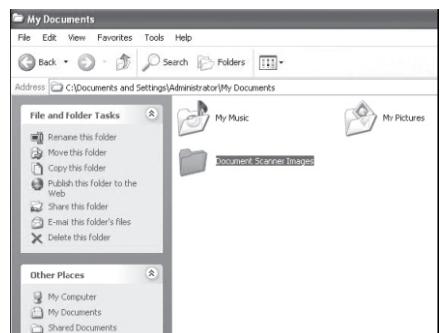
**【Clear List】** Right-click the selected pictures can clear the list

**【Refresh List】** Right-click the selected pictures, you can refresh the list

**【Switch View】** the image view and video conversion can be transformed

**【Load Image】** Open all the pictures which are in the folder.

**【Save image】** Scanned images stored in the main directory of the "images" folder



## Trouble shooting

---

Please check the following list of possible problems and their solutions first. If you cannot solve the problem(s) after consulting the list, stop using the product at once and contact your retailer or the nearest CamScanner customer service.

Problem	Possible solutions
No images	<ul style="list-style-type: none"><li>• Check all cables are properly connected and everything is turned on</li><li>• Make sure the projector or computer is not in sleep mode.</li></ul>
Blurry images	<ul style="list-style-type: none"><li>• There may be dirt on the lenses.</li></ul>
Dark images	<ul style="list-style-type: none"><li>• Is the lighting device turned on?</li></ul>

## Specifications

---

Product Profile	Folded / Stand up
Applications	Scanning, Visual Presenting
Speed	Instantaneous, One-click
Scanning Method	CMOS
Color Depth	24 bit
Paper Size	Letter, A3, A4, A5, legal and other
Resolution	1600 x 1280, 2000 x 1600, 2592 x 1944
Model	X200 X300 X500 X500-3
Image Format	PNG, JPG, BMP, TIFF, PDF
Video Format	AVI
I/O Connection	USB 2.0
Power Source	Powered via USB cable
Image Control	Brightness, Exposure, Sharpness, Color, Gain, Hue/Saturation
Lighting Condition	Works under natural light or with built-in LED lights

# Technical specifications

Item	Model	Specification
Sensor Parameter	X200	2 MegaPixels CMOS Active Pixels Digital Image Sensor
	X300	3 MegaPixels CMOS Active Pixels Digital Image Sensor
	X500	5 MegaPixels CMOS Active Pixels Digital Image Sensor
	X500-3	5 MegaPixels CMOS Active Pixels Digital Image Sensor
Optical Format	X200	1/3 inch
	X300	1/3 inch
	X500	1/2.5 inch
	X500-3	1/2.5 inch
Active Pixels Max	X200	1600H X 1280V
	X300	2000H X 1600V
	X500	2592H X1944V
	X500-3	2592H X1944V
Frame Rate	30FPS (VGA)	
ADC Resolution	On-chip 10-bit	
Responsivity	1.0 V/Lux-sec	
Illumination	50- ∞Lux	
View Angle	X200	55°
	X300	
	X500	66°
	X500-3	78°
SNR	X200	42dB
	X300	
	X500	40dB
	X500-3	
Dynamic Range	X200	62dB
	X300	
	X500	68dB
	X500-3	
Operating temperature		-30 to +70 °C
Lens	X200	3G1P + IR
	X300	
	X500	2G2P + IR
	X500-3	



Lens F number	X200	F 5.8mm F/NO 3.0
	X300	
	X500	F 4.2mm F/NO 2.8
	X500-3	
Flange Back Length( FB )	X200	1.21mm
	X300	
	X500	0.8mm
	X500-3	
Back Focal Length (BFL)	X200	2.85mm
	X300	
	X500	0.8mm
	X500-3	
Focal Length (EFL)	X200	F=7.45mm
	X300	
	X500	F=2.7mm
	X500-3	
Power supply		USB POWER CABLE
Power Consumption		220mW at Maximum data rate,3.3V
Power Consumption Current at 30fps		<120mA
Suspend Current		<5 mA
Image Resolution	X200	1600H X 1280V B5
	X300	2000H X 1600V A4
	X500	2592H X1944V A4
	X500-3	2592H X1944V A3
Output Format		YUY2
Communication Interface		USB2.0 With UVC
AGC/AEC/ White Balance		Auto
Certifications		FCC, CE, RoHS



## Limited Warranty

For a period of time beginning on the date of purchase of the applicable product and extending as set forth in the "Warranty Period of CamScanner Product Purchased" section of the warranty card, we

warrants that the applicable product ("Product") substantially conforms to CamScanner's documentation for the product and that its manufacture and components are free of defects in material and workmanship under normal use. "You" as used in this agreement means you individually or the business entity on whose behalf you use or install the product, as applicable. This limited warranty extends only to You as the original purchaser. Except for the foregoing, the Product is provided "AS IS." In no event does the producer warrant that You will be able to operate the Product without problems or interruptions, or that the Product is suitable for your purposes. Your exclusive remedy and the entire liability of the producer under this paragraph shall be, at the producer's option, the repair or replacement of the Product with the same or a comparable product. This warranty does not apply to (a) any Product on which the serial number has been defaced, modified, or removed, or (b) cartons, cases, batteries, cabinets, tapes, or accessories used with this product. This warranty does not apply to any Product that has suffered damage, deterioration or malfunction due to (a) accident, abuse, misuse, neglect, fire, water, lightning, or other acts of nature, commercial or industrial use, unauthorized product modification or failure to follow instructions included with the Product, (b) misapplication of service by someone other than the manufacturer's representative, (c) any shipment damages (such claims must be made with the carrier), or (d) any other causes that do not relate to a Product defect. The Warranty Period of any repaired or replaced Product shall be the longer of (a) the original Warranty Period or (b) thirty (30) days from the date of delivery of the repaired or replaced product.

## **Limitations of Warranty**

The producer makes no warranties to any third party. You are responsible for all claims, damages, settlements, expenses, and attorneys' fees with respect to claims made against You as a result of Your use or misuse of the Product. This warranty applies only if the Product is installed, operated, maintained, and used in accordance with CamScanner specifications. Specifically, the warranties do not extend to any failure caused by (i) accident, unusual physical, electrical, or electromagnetic stress, neglect or misuse, (ii) fluctuations in electrical power beyond CamScanner specifications, (iii) use of the Product with any accessories or options not furnished by the producer or its authorized agents, or (iv) installation, alteration, or repair of the Product by anyone other than the producer or its authorized agents.

## **Disclaimer of Warranty**

EXCEPT AS EXPRESSLY PROVIDED OTHERWISE HEREIN AND TO THE MAXIMUM EXTENT PERMITTED BY APPLICABLE LAW, AVERMEDIA DISCLAIMS ALL OTHER WARRANTIES WITH RESPECT TO THE PRODUCT, WHETHER EXPRESS, IMPLIED, STATUTORY OR OTHERWISE, INCLUDING WITHOUT LIMITATION, SATISFACTORY QUALITY, COURSE OF DEALING, TRADE USAGE OR PRACTICE OR THE IMPLIED WARRANTIES OF MERCHANTABILITY, FITNESS FOR A PARTICULAR PURPOSE OR NONINFRINGEMENT OF THIRD PARTY RIGHTS.

## **Limitation of Liability**

IN NO EVENT SHALL AVERMEDIA BE LIABLE FOR INDIRECT, INCIDENTAL, SPECIAL, EXEMPLARY, PUNITIVE, OR CONSEQUENTIAL DAMAGES OF ANY NATURE INCLUDING, BUT NOT LIMITED TO, LOSS OF PROFITS, DATA, REVENUE, PRODUCTION, OR USE, BUSINESS INTERRUPTION, OR PROCUREMENT OF SUBSTITUTE GOODS OR SERVICES ARISING OUT OF OR IN CONNECTION WITH THIS LIMITED WARRANTY, OR THE USE OR PERFORMANCE OF ANY PRODUCT, WHETHER BASED ON CONTRACT OR TORT, INCLUDING NEGLIGENCE, OR ANY OTHER LEGAL THEORY, EVEN IF AVERMEDIA HAS ADVISED OF THE POSSIBILITY OF SUCH DAMAGES. THE PRODUCER'S TOTAL, AGGREGATE LIABILITY FOR DAMAGES OF ANY NATURE, REGARDLESS OF FORM OF ACTION, SHALL IN NO EVENT EXCEED THE AMOUNT PAID BY YOU TO THE PRODUCER FOR THE SPECIFIC PRODUCT UPON WHICH LIABILITY IS BASED.

## **Governing Law and Your Rights**

This warranty gives You specific legal rights; You may also have other rights granted under state law. These rights vary from state to state.